



# Asheville Integrative Acupuncture

## Business Information for Turn-Key Clinic

Prepared by [Asheville Integrative Acupuncture]

**Building and Location: 24 Sardis Rd, Unit F, Asheville, NC 28806**

- Second Floor Unit
- Elevator and Stairs
- Ample Off-street Parking
- Private Parking For Employees with a Private Entrance

**Rooms**

- Reception/Waiting Room
- Large Common Room (can be used for group events, holds 15 yoga mats side-by-side)
- One Restroom
- Two Treatment Rooms
- Practitioner Desk Area (with private entrance)

**OUTSIDE OF BUILDING. OFFICE SPACE IN FAR LEFT CORNER.**





## RECEPTION AREA



VIEW UPON WALKING INSIDE



VIEW COMING FROM TREATMENT ROOMS

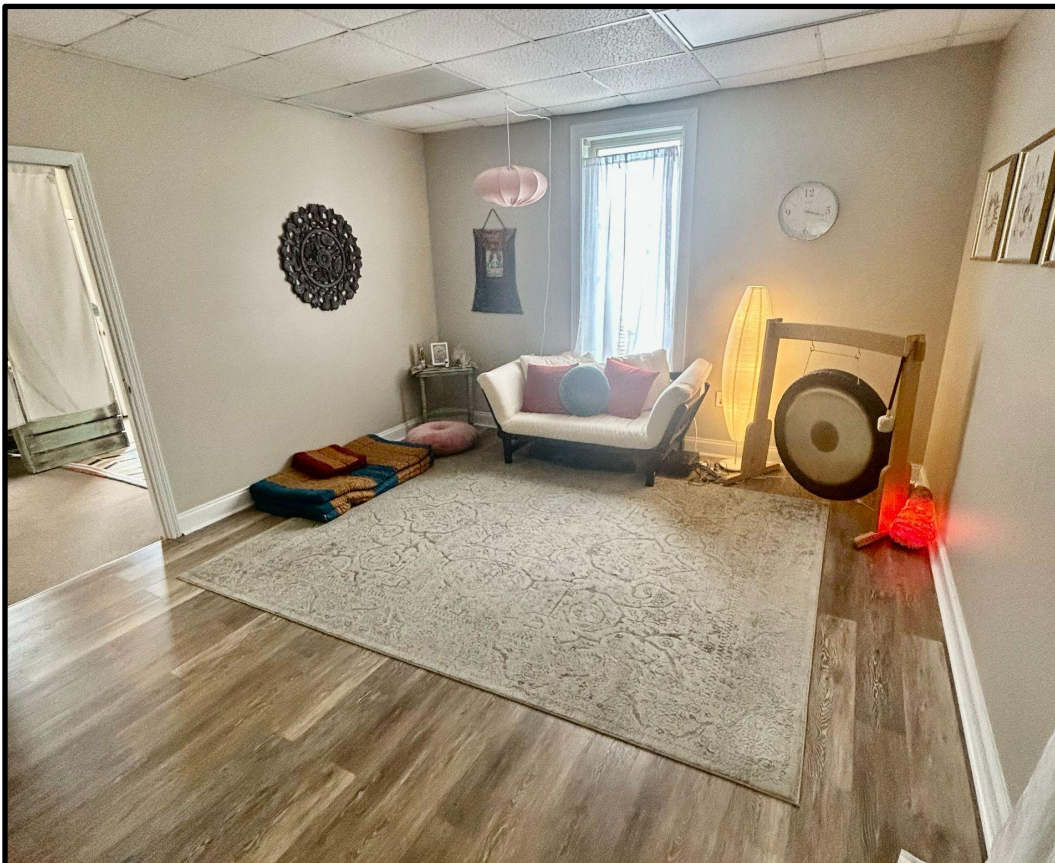


## COMMON ROOM



*Space for events, sound healing, yoga, movement classes, or community acupuncture.*

*\*Gong not included with the rest of the office items\**





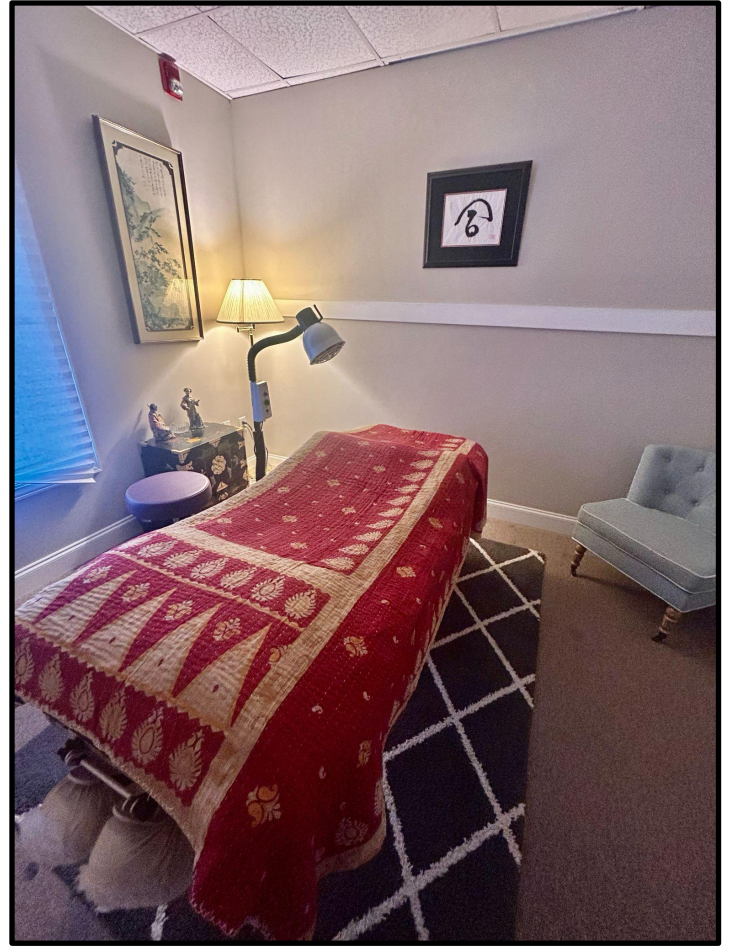
**BATHROOM & OTHER DESK SPACE + PRIVATE ENTRANCE**



**TWO TREATMENT**

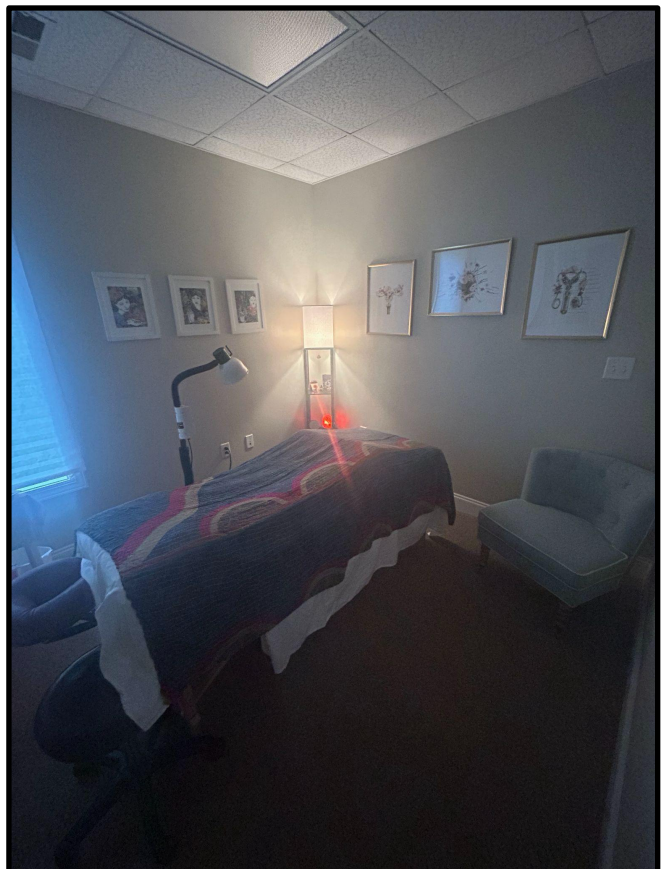


# ROOMS



## **The Practice**

Asheville Integrative Acupuncture is a distinguished acupuncture practice renowned within



our community as the premier destination for fertility acupuncture services. Our reputation extends beyond Asheville, drawing patients from neighboring cities within Western North Carolina and the broader state. Remarkably, despite operating only 1.5 days per week, our clinic consistently administers an impressive annual tally of 450-500 acupuncture sessions. We are committed to providing exceptional care and comprehensive support to those seeking fertility and other health solutions.

### **Why Purchase An Established Practice in Asheville?**

In Asheville and surrounding areas, a substantial community of nearly 300 acupuncturists exists. Many have cultivated established clinics boasting strong reputations and robust networks within the local healthcare and wellness landscape. Asheville Integrative Acupuncture is firmly situated among these reputable practices. Initiating a new acupuncture clinic in a city already densely populated with practitioners presents a formidable challenge, requiring several years of effort to nurture a loyal patient base and create a distinct, trustworthy brand presence in the community.

By acquiring Asheville Integrative Acupuncture, you gain a distinct advantage. Rather than embarking on the difficult task of building a practice from the ground up, you will assume ownership of a thriving clinic with well-established roots. Our clinic has cultivated relationships with notable health and wellness centers in Asheville, such as: Lilac Health Birth Center, MAHEC, Laurel OBGYN, Carolinas Fertility Institute, and Lantern Health. Furthermore, we have fostered a robust patient foundation, with individuals seeking our services weekly, bi-weekly, or monthly.

Our reputation extends to being a trusted destination for fertility acupuncture, with frequent referrals from Carolinas Fertility Institute. We see many patients seeking pregnancy acupuncture services. In the initial half of 2023, our private clinic recorded 300 appointments, and an additional 275 appointments were facilitated through our community acupuncture program. This program, our 501c3, Holistic Community Acupuncture & Wellness, works closely with Asheville Community Yoga to provide weekly community



acupuncture. Our strategic implementation of SEO and marketing strategies led to a remarkable doubling of our appointment volume, reflecting our commitment to continued growth and excellence. To further engage our audience, we maintain an active wellness blog, a weekly wellness newsletter, and a presence on Instagram.

## **Why Asheville?**

We love that our clinic is in the beautiful city of Asheville, North Carolina. Nestled in the picturesque Western NC mountains, this city stands out vibrantly and is known for its exceptional qualities. With breathtaking access to nature and a plethora of outdoor pursuits, its temperate year-round climate embraces every season. Asheville has a dynamic music and art scene, exceptional breweries, and a warm and hospitable community. Asheville has consistently earned its place as one of the top cities in America for food enthusiasts. With an extensive variety of local restaurants that represent diverse cultures and cuisines, you will always enjoy the options. This city feels more like a small town once you settle in!

Moreover, Asheville is a hub for holistic medicine, especially with the recent relocation of the Ayurvedic Institute. The city's holistic alternatives flourish, attracting individuals from near and far who recognize Asheville as the quintessential destination for wellness and holistic health.

By becoming the proprietor of an established acupuncture clinic in Asheville, you seamlessly integrate into the heart of its wellness culture and community.

## **My Guarantee**

I am committed to facilitating a seamless transition for any prospective buyer. This will ensure a stress-free and efficient onboarding process. I strongly recommend a collaborative working period before purchase, during which I will work hand-in-hand with you to integrate into our

well-established community. This integration will allow you the opportunity to familiarize yourself with our existing patient base and gain a comprehensive understanding of the intricacies involved in sustaining an acupuncture clinic.

### **Average Hours/Work Days & Expansion**

I work 1.5 days per week at the clinic, typically 12-14 hours weekly. However, you will have the flexibility to choose your preferred work schedule, and the income projections are contingent upon the number of days/hours you opt to work.

In 2022, I logged 428 hours; during the first eight months of 2023, I accumulated 312 hours. This business is continually accelerating. It's important to note that ample room exists for expansion and the potential for substantial growth in this endeavor. While you will receive an excellent foundation, the sky's the limit, and your vision can be curated and customized to your needs and ideas.

### **Income Over the Last 3 Years**

2021: \$45,853.00

2022: \$48,124.00

2023: \$43,278.60

*\*Again, this was for only working eight days each month—great space for expansion.*

### **Expenses For One Year**

Rent: \$8,400

Cell: \$1479.96

Business Line: \$159.92

Electric: \$1841.61

Business Internet: \$1499.76

Marketing/office help: \$1200

Contract Employee: \$6,695.00  
Website: \$275  
Office Supplies \$1005.33

Rental income: \$12,600



### **Profits and Loss**

Average Yearly Income: \$45,751.86

Average Yearly Income + Rental Income: \$58,351.86

Average yearly profits: \$35,855.28

### **The Purposed Sale**

The sale of Asheville Integrative Acupuncture includes all rights to the business (website, social media, legal ownership), plus furniture and equipment. I am offering to mentor you and integrate you into the clinic environment.

**Total Value of the Clinic: \$107,565.84**

This value is the average yearly profit times three.

**Asking Price: \$40,000**

Contact Dr. Krystal Kinnunen [Krystal@krystalkinnune.com](mailto:Krystal@krystalkinnune.com) or text 828-301-7166